


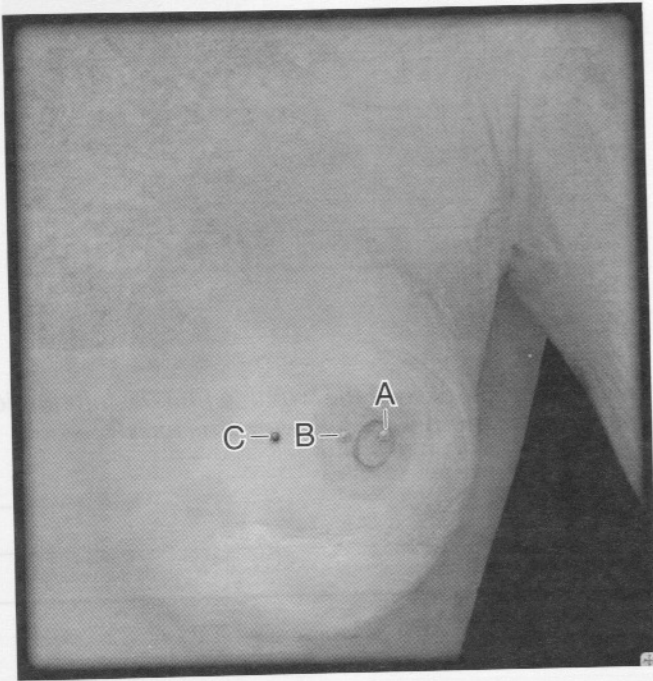
## The Female Breast

### EXERCISE 14.1:

#### Reproductive System—Breast—Female, Anterior View

	<b>SELECT TOPIC</b>	<b>SELECT VIEW</b>
	Breast—Female	Anterior

- Click **LAYER 1** in the **LAYER CONTROLS** window, and you will see the following image:



- Mouse-over the pins on the screen to find the information necessary to identify the following structures:

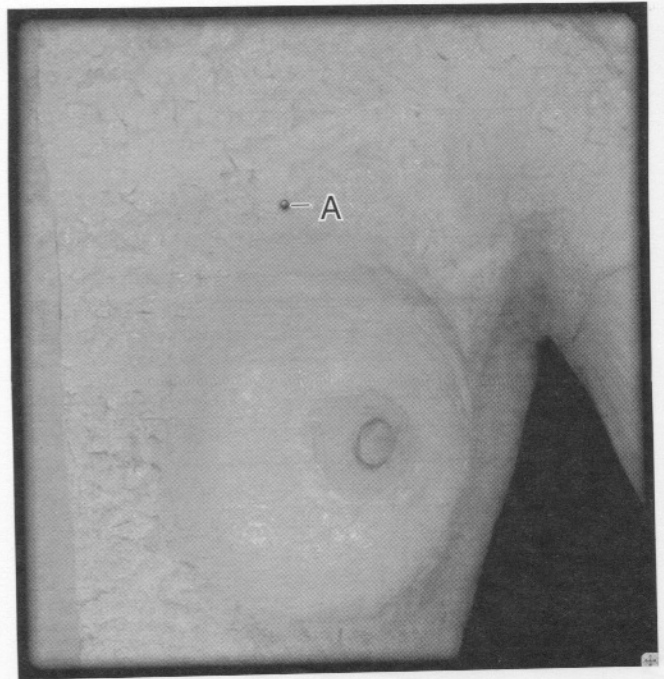
- A. \_\_\_\_\_
- B. \_\_\_\_\_
- C. \_\_\_\_\_

### CHECK POINT

#### Breast—Female, Anterior View

- Name the elevation of skin containing lactiferous ducts for transferring milk during nursing.
- Name the structure that maintains a permanent pigment increase during the first pregnancy.
- What is the function of this structure?

- Click **LAYER 2** in the **LAYER CONTROLS** window, and you will see the following image:



- Mouse-over the pin on the screen to find the information necessary to identify the following structure:

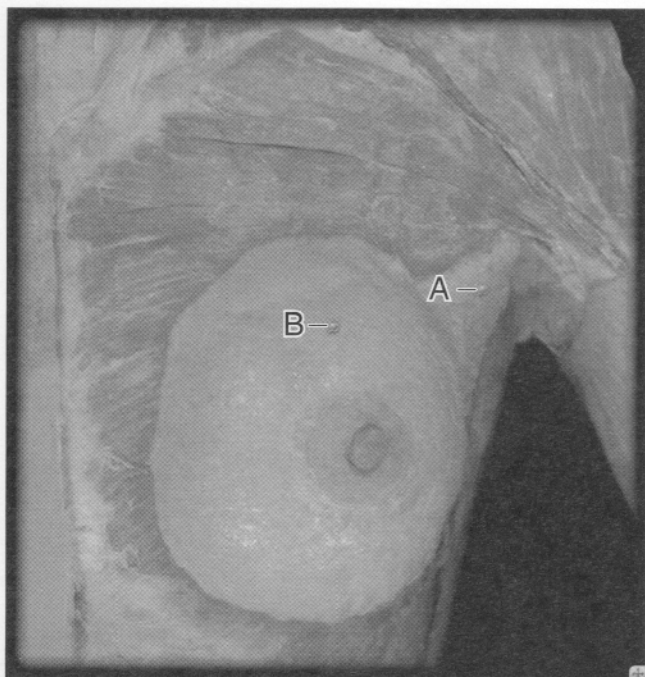
- A. \_\_\_\_\_

### CHECK POINT

#### Breast—Female, Anterior View, continued

- What tissue-types make up the pectoral superficial fascia?
- What structures do they contain?
- Name four functions of this structure.

- Click **LAYER 3** in the **LAYER CONTROLS** window, and you will see the following image:



- Mouse-over the pins on the screen to find the information necessary to identify the following structures:

A. \_\_\_\_\_

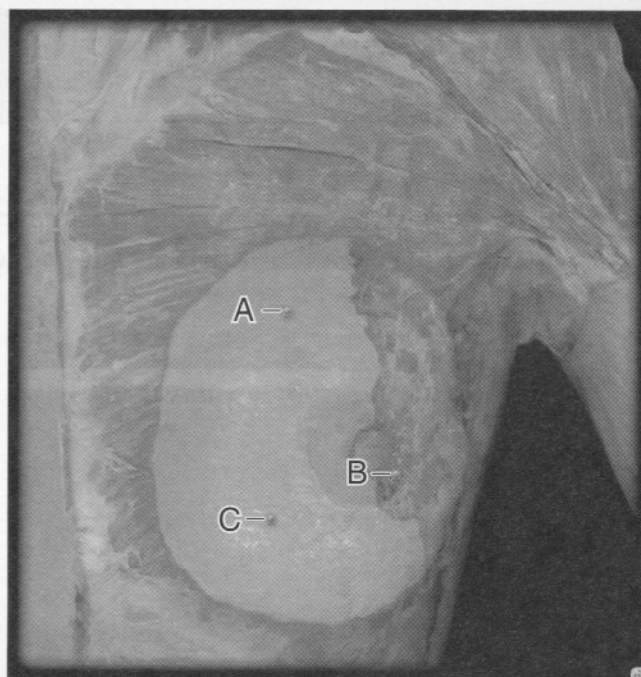
B. \_\_\_\_\_

### CHECK POINT

#### Breast—Female, Anterior View, *continued*

- Where is the base of the breast located? What is located at its apex?
- Where is the axillary process of the breast located?
- What three variables affect the size and shape of the breast?

- Click **LAYER 4** in the **LAYER CONTROLS** window, and you will see the following image:



- Mouse-over the pins on the screen to find the information necessary to identify the following structures:

A. \_\_\_\_\_

B. \_\_\_\_\_

C. \_\_\_\_\_

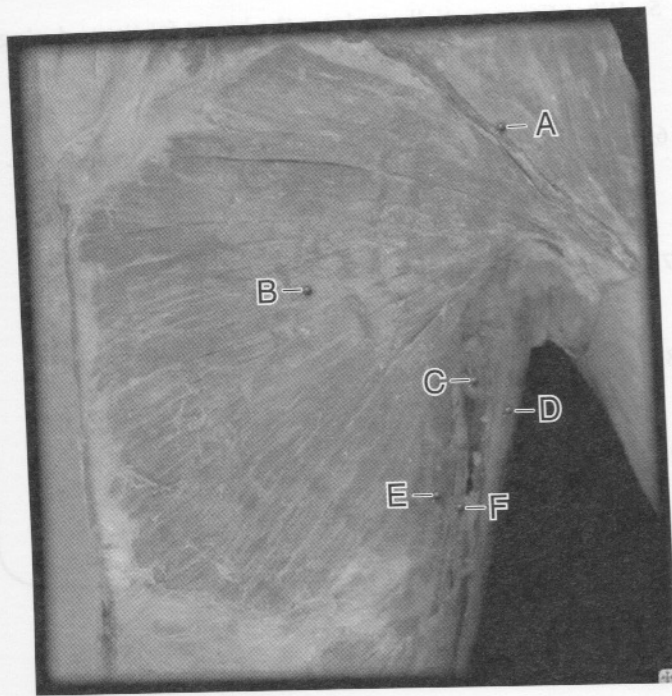
### CHECK POINT

#### Breast—Female, Anterior View, *continued*

- Name the structures that support the breast tissue.
- What affect does age have on these structures?
- Describe the lactiferous ducts.



- Click **LAYER 5** in the **LAYER CONTROLS** window, and you will see the following image:



- Mouse-over the pins on the screen to find the information necessary to identify the following nonreproductive system structures:

- \_\_\_\_\_
- \_\_\_\_\_
- \_\_\_\_\_
- \_\_\_\_\_
- \_\_\_\_\_
- \_\_\_\_\_

#### EXERCISE 14.2:

#### Imaging—Reproductive System—Mammogram

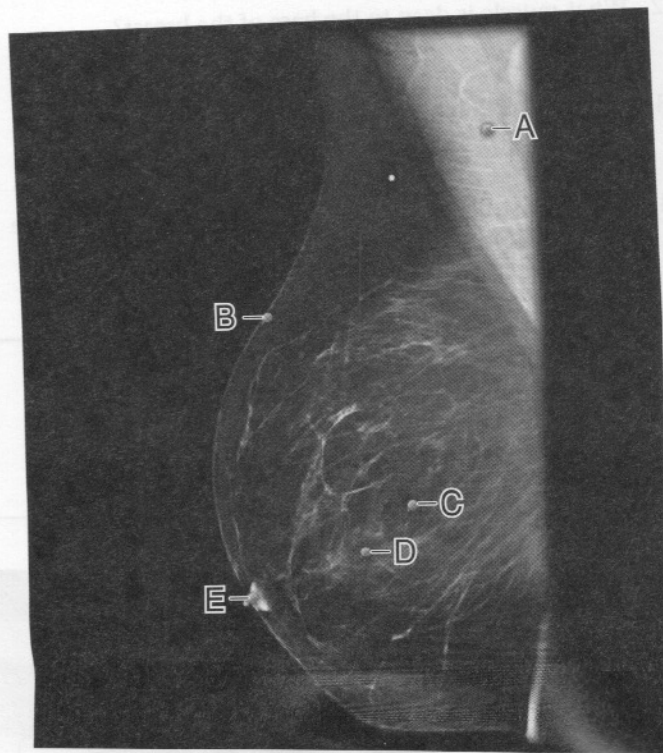


**SELECT TOPIC**  
Mammogram

**SELECT VIEW**

X Ray: Lateral

- Click the **TAGS ON/OFF** button, and you will see the following image:



- Mouse-over the pins on the screen to find the information necessary to identify the following structures:

- \_\_\_\_\_
- \_\_\_\_\_
- \_\_\_\_\_
- \_\_\_\_\_
- \_\_\_\_\_

IN REVIEW

What Have I Learned?

The following questions cover the material that you have just learned, the breast. Apply what you have learned to answer these questions on a separate piece of paper.

1. What is the composition of the breast?
2. What muscle is deep to the base of the breast?
3. The “tail” of the breast extends into the \_\_\_\_\_.
4. Into what structures do the suspensory ligaments divide the breast?
5. What tissue partially replaces the breast fat tissue during pregnancy and lactation?
6. The \_\_\_\_\_ allows movement of the breast independent of the thoracic wall muscles.
7. What are the functions of the suspensory ligaments?
8. What is the function of lactiferous ducts?
9. Where does each duct open?

The Female Pelvis

EXERCISE 14.3:

Reproductive System—Pelvis—Female, Sagittal View

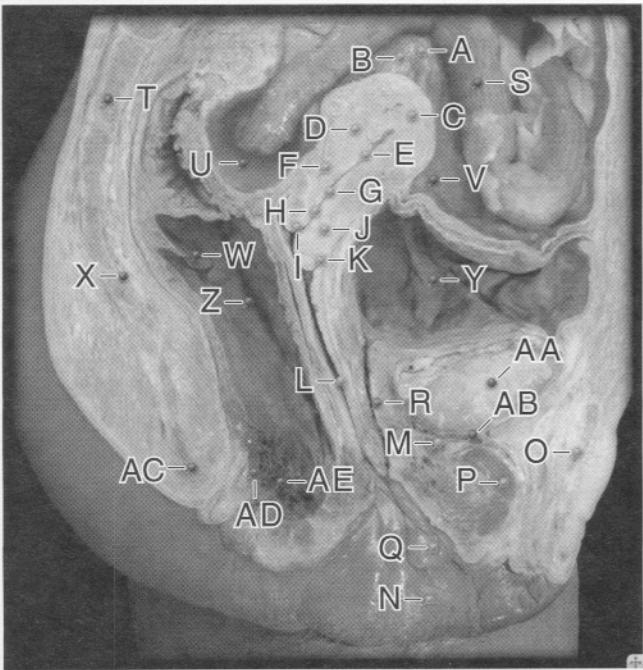
SELECT TOPIC

Pelvis—Female

SELECT VIEW

Sagittal

- Click **LAYER 1** in the **LAYER CONTROLS** window, and you will see the following image:



- Mouse-over the pins on the screen to find the information necessary to identify the following structures:

- A. \_\_\_\_\_
- B. \_\_\_\_\_
- C. \_\_\_\_\_
- D. \_\_\_\_\_
- E. \_\_\_\_\_
- F. \_\_\_\_\_
- G. \_\_\_\_\_
- H. \_\_\_\_\_
- I. \_\_\_\_\_
- J. \_\_\_\_\_
- K. \_\_\_\_\_
- L. \_\_\_\_\_
- M. \_\_\_\_\_
- N. \_\_\_\_\_
- O. \_\_\_\_\_
- P. \_\_\_\_\_
- Q. \_\_\_\_\_
- R. \_\_\_\_\_

Nonreproductive System Structures (blue pins)

- S. \_\_\_\_\_
- T. \_\_\_\_\_
- U. \_\_\_\_\_



- V. \_\_\_\_\_  
 W. \_\_\_\_\_  
 X. \_\_\_\_\_  
 Y. \_\_\_\_\_  
 Z. \_\_\_\_\_  
 AA. \_\_\_\_\_  
 AB. \_\_\_\_\_  
 AC. \_\_\_\_\_  
 AD. \_\_\_\_\_  
 AE. \_\_\_\_\_

### CHECK POINT

#### Pelvis—Female, Sagittal View

1. Name the primary organ of female sexual response. Describe its structures.
2. Describe the structure of the crus of the clitoris. What is its function?
3. Describe the structure of the labium minus. What is its function?

### EXERCISE 14.4:

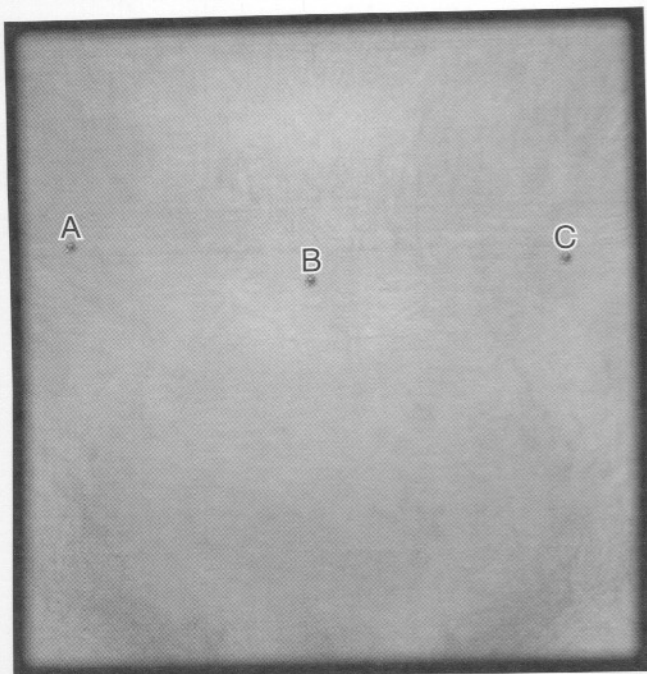
#### Reproductive System—Pelvis—Female, Superior View



SELECT TOPIC  
Pelvis—Female

SELECT VIEW  
Superior

- Click on **LAYER 1** in the **LAYER CONTROLS** window, and you will see the following image:



- Mouse-over the pins on the screen to find the information necessary to identify the following nonreproductive system structures:

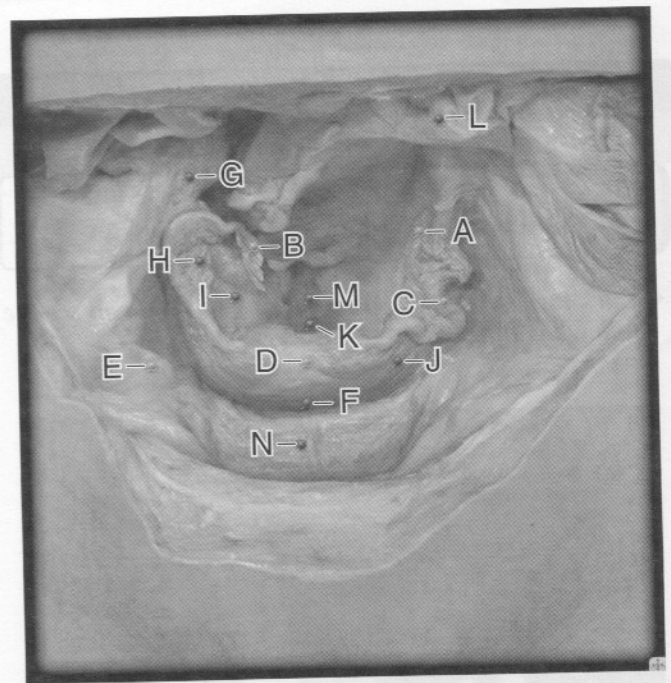
- A. \_\_\_\_\_  
 B. \_\_\_\_\_  
 C. \_\_\_\_\_

### CHECK POINT

#### Pelvis—Female, Superior View

1. Name the lower medial abdominal region.
2. What is another name for this region?
3. Name the two regions that flank this region on either side.

- Click **LAYER 2** in the **LAYER CONTROLS** window, and you will see the following image:



- Mouse-over the pins on the screen to find the information necessary to identify the following structures:

- A. \_\_\_\_\_  
 B. \_\_\_\_\_  
 C. \_\_\_\_\_  
 D. \_\_\_\_\_  
 E. \_\_\_\_\_  
 F. \_\_\_\_\_  
 G. \_\_\_\_\_  
 H. \_\_\_\_\_

- I. \_\_\_\_\_
- J. \_\_\_\_\_
- K. \_\_\_\_\_

Nonreproductive System Structures (blue pins)

- L. \_\_\_\_\_
- M. \_\_\_\_\_
- N. \_\_\_\_\_

CHECK POINT

Pelvis—Female, Superior View, *continued*

- 4. What is a hysterectomy?
- 5. Name the blind recess that lies between the urinary bladder and the uterus.
- 6. Name the structure that is the embryonic remnant of the gubernaculum of the ovary. What was its embryonic function?

EXERCISE 14.5:

Imaging—Uterus and Vagina



SELECT TOPIC  
Uterus and Vagina

SELECT VIEW  
Sagittal

- Click the **TAGS ON/OFF** button, and you will see the following image:

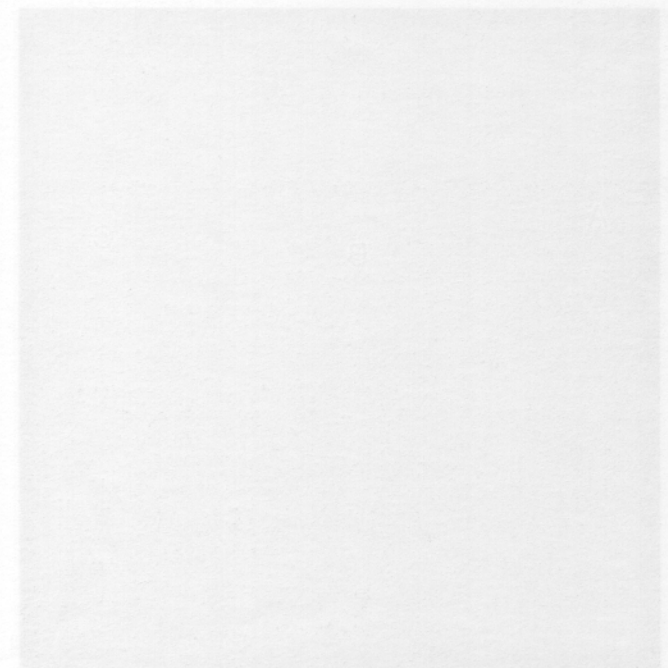


- Mouse-over the pins on the screen to find the information necessary to identify the following structures:

- A. \_\_\_\_\_
- B. \_\_\_\_\_
- C. \_\_\_\_\_
- D. \_\_\_\_\_
- E. \_\_\_\_\_
- F. \_\_\_\_\_
- G. \_\_\_\_\_
- H. \_\_\_\_\_

Nonreproductive System Structures (blue pins)

- I. \_\_\_\_\_
- J. \_\_\_\_\_
- K. \_\_\_\_\_
- L. \_\_\_\_\_
- M. \_\_\_\_\_
- N. \_\_\_\_\_
- O. \_\_\_\_\_
- P. \_\_\_\_\_
- Q. \_\_\_\_\_
- R. \_\_\_\_\_





## EXERCISE 14.13c:

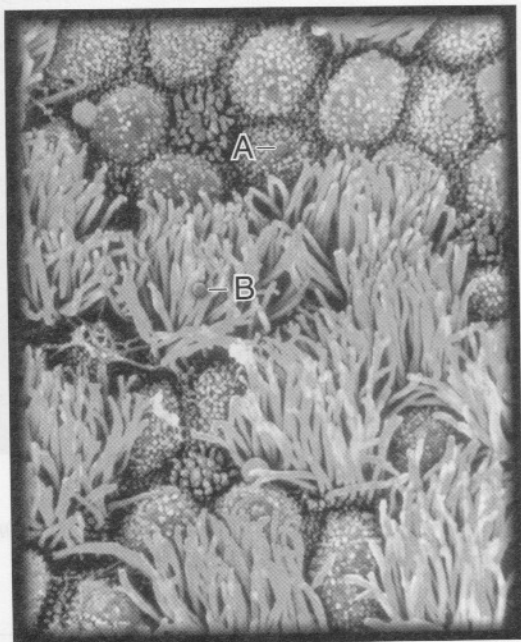
## Reproductive System—Uterine Tube, Histology



**SELECT TOPIC**  
Uterine Tube

**SELECT VIEW**  
SEM: Low  
Magnification

- Click the **TAGS ON/OFF** button, and you will see the following image:



- Mouse-over the pins on the screen to find the information necessary to identify the following structures:

A. \_\_\_\_\_

B. \_\_\_\_\_

## The Female Perineum

## EXERCISE 14.14:

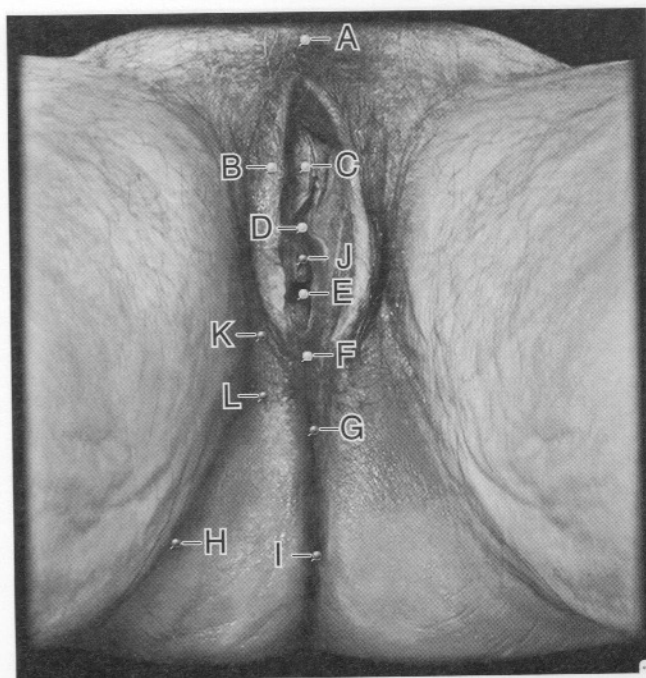
## Reproductive System—Perineum—Female, Inferior View



**SELECT TOPIC**  
Perineum—Female

**SELECT VIEW**  
Inferior

- Click on **LAYER 1** in the **LAYER CONTROLS** window, and you will see the following image:



- Mouse-over the pins on the screen to find the information necessary to identify the following structures:

A. \_\_\_\_\_

B. \_\_\_\_\_

C. \_\_\_\_\_

D. \_\_\_\_\_

E. \_\_\_\_\_

F. \_\_\_\_\_

G. \_\_\_\_\_

H. \_\_\_\_\_

I. \_\_\_\_\_

## Nonreproductive System Structures (blue pins)

J. \_\_\_\_\_

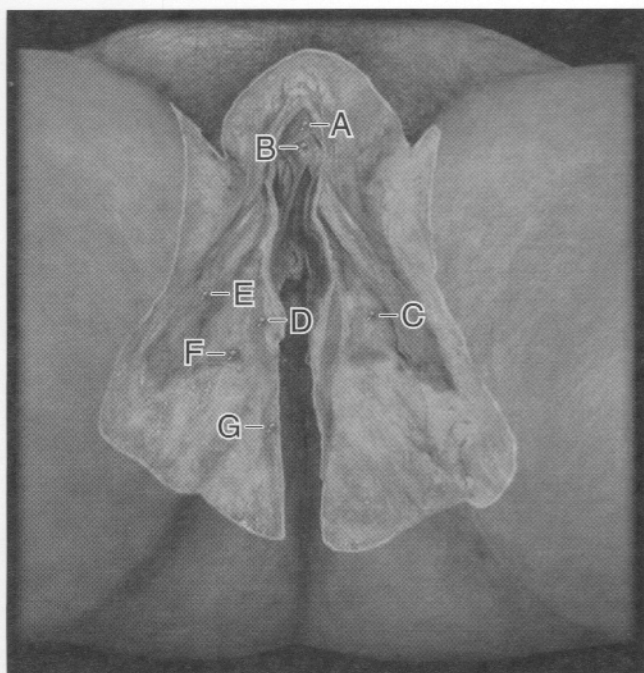
K. \_\_\_\_\_

L. \_\_\_\_\_

**CHECK POINT****Perineum—Female, Inferior View**

1. Name the subcutaneous fat pad anterior to the pubic symphysis and pubic bones. When does the fat layer increase and decrease?
2. Name the limiting structures of the urogenital triangle. What is contained in this area?
3. What is the hymen? What is its function?

- Click on **LAYER 2** in the **LAYER CONTROLS** window, and you will see the following image:



- Mouse-over the pins on the screen to find the information necessary to identify the following structures:

- A. \_\_\_\_\_
- B. \_\_\_\_\_
- C. \_\_\_\_\_

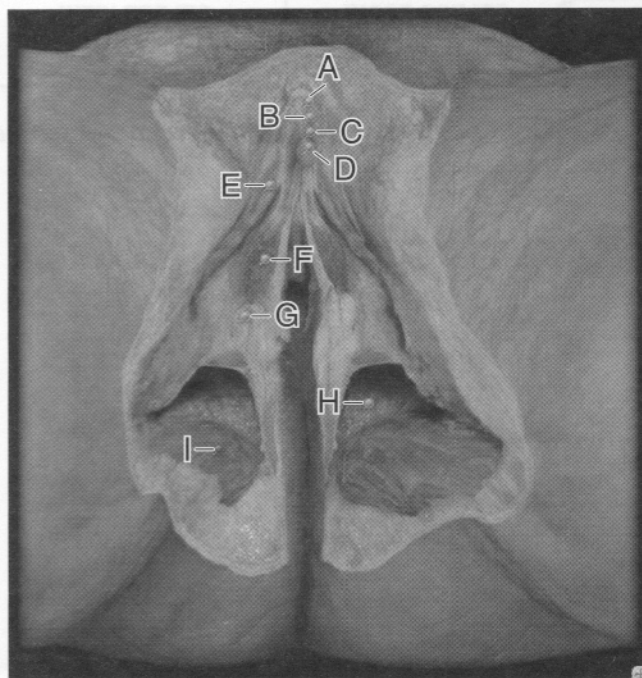
**Nonreproductive System Structures (blue pins)**

- D. \_\_\_\_\_
- E. \_\_\_\_\_
- F. \_\_\_\_\_
- G. \_\_\_\_\_

**CHECK POINT****Perineum—Female, Inferior View, continued**

4. Name the hood of thin skin over the glans clitoris. What are its functions?
5. Describe the structure of the glans clitoris. What is its function?

- Click **LAYER 3** in the **LAYER CONTROLS** window, and you will see the following image:



- Mouse-over the pins on the screen to find the information necessary to identify the following structures:

- A. \_\_\_\_\_
- B. \_\_\_\_\_
- C. \_\_\_\_\_
- D. \_\_\_\_\_
- E. \_\_\_\_\_
- F. \_\_\_\_\_
- G. \_\_\_\_\_
- H. \_\_\_\_\_

**Nonreproductive System Structure (blue pin)**

- I. \_\_\_\_\_

**CHECK POINT****Perineum—Female, Inferior View, continued**

6. What is the function of the clitoris? What occurs within the clitoris during sexual arousal?
7. Name the three sections of the clitoris.
8. What is the function of the bulb of the vestibule?



21. What are the dual functions of the penis?

22. What are the divisions of the penis?

23. Describe the erectile bodies of the penis.

24. Which structure encloses the spongy urethra? What is the terminal end of this structure?

25. How is the size and shape of the penis determined?

26. What events occur in the process of an erection?

#### EXERCISE 14.16:

#### Reproductive System—Pelvis—Male, Sagittal View



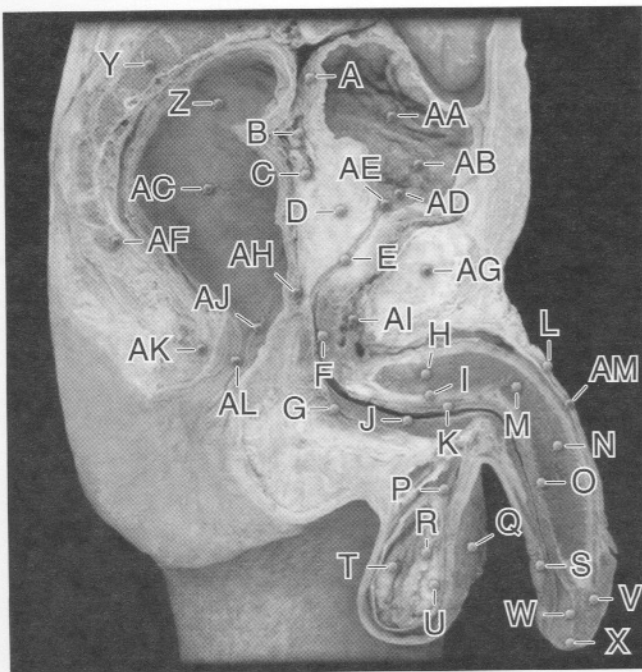
**SELECT TOPIC**

**Pelvis—Male**

**SELECT VIEW**

**Sagittal**

- Click **LAYER 1** in the **LAYER CONTROLS** window, and you will see the following image:



- Mouse-over the pins on the screen to find the information necessary to identify the following structures:

- A. \_\_\_\_\_
- B. \_\_\_\_\_
- C. \_\_\_\_\_
- D. \_\_\_\_\_
- E. \_\_\_\_\_
- F. \_\_\_\_\_
- G. \_\_\_\_\_
- H. \_\_\_\_\_
- I. \_\_\_\_\_
- J. \_\_\_\_\_
- K. \_\_\_\_\_
- L. \_\_\_\_\_
- M. \_\_\_\_\_
- N. \_\_\_\_\_
- O. \_\_\_\_\_
- P. \_\_\_\_\_
- Q. \_\_\_\_\_
- R. \_\_\_\_\_
- S. \_\_\_\_\_
- T. \_\_\_\_\_
- U. \_\_\_\_\_
- V. \_\_\_\_\_
- W. \_\_\_\_\_
- X. \_\_\_\_\_

#### Nonreproductive System Structures (blue pins)

- Y. \_\_\_\_\_
- Z. \_\_\_\_\_
- AA. \_\_\_\_\_
- AB. \_\_\_\_\_
- AC. \_\_\_\_\_
- AD. \_\_\_\_\_
- AE. \_\_\_\_\_
- AF. \_\_\_\_\_
- AG. \_\_\_\_\_
- AH. \_\_\_\_\_

- AI. \_\_\_\_\_
- AJ. \_\_\_\_\_
- AK. \_\_\_\_\_
- AL. \_\_\_\_\_
- AM. \_\_\_\_\_

## CHECK POINT

### Pelvis—Male, Sagittal View

1. Name the paired and unpaired erectile tissues of the penis. What is their function?
2. What structure is responsible for most of the increased size and rigidity of the penis during an erection?
3. What is circumcision? How does the structure of the prepuce compare between circumcised and uncircumcised males?

## IN REVIEW

### What Have I Learned?

The following questions cover the material that you have just learned, the male pelvis. Apply what you have learned to answer these questions on a separate piece of paper.

1. Describe the structure of the crus of the penis. What is its function?
2. Describe the structure of the tunica albuginea of the penis. What is its function?
3. Describe the structure of the bulb of the penis. What is its function?
4. What are the actions of the bulbospongiosus muscle in the male? What are the results of these actions?

5. Describe the parts of the male urethra from proximal to distal. What is the function of the male urethra?
6. Name the accessory reproductive organ that contributes 30 percent of the semen volume. What is BPH?
7. Name the accessory reproductive organ that contributes 60 percent of the semen volume. What is the pH of this contribution?
8. Name the network of veins that drain the erectile tissues of the penis. What other structures are drained by these veins?



## IN REVIEW

### What Have I Learned?


The following questions cover the material that you have just learned, the male perineum. Apply what you have learned to answer these questions on a separate piece of paper.

1. How does the scrotal temperature compare with body temperature? Why?
2. How is the scrotum divided?

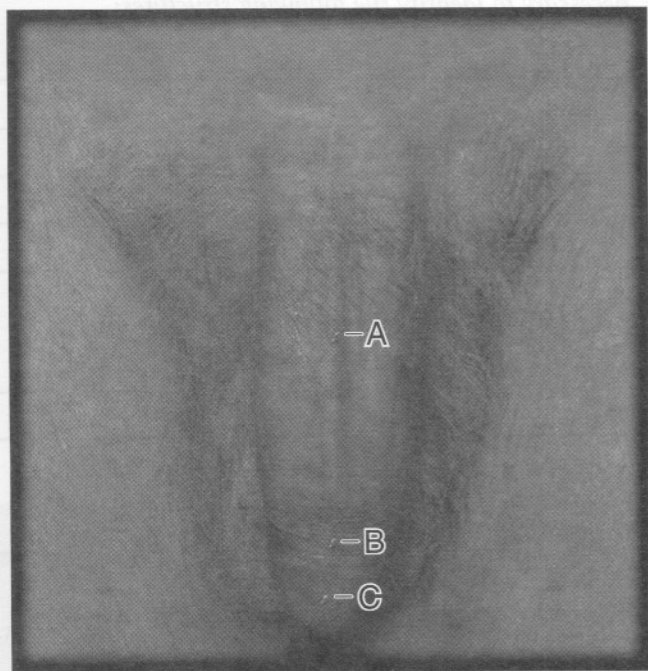
## The Penis and Scrotum

### EXERCISE 14.19:

#### Reproductive System—Penis and Scrotum, Anterior View

	<b>SELECT TOPIC</b>	<b>SELECT VIEW</b>
	Penis and Scrotum	Anterior

- Click **LAYER 1** in the **LAYER CONTROLS** window, and you will see the following image:



- Mouse-over the pins on the screen to find the information necessary to identify the following structures:

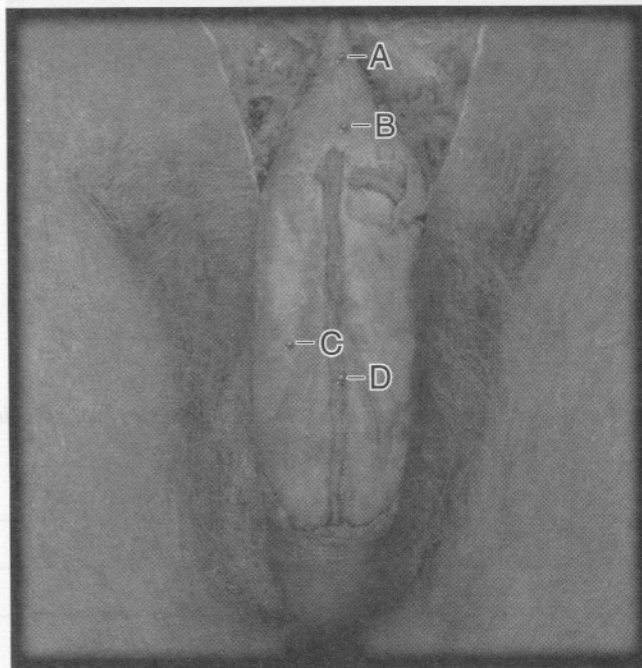
- A. \_\_\_\_\_
- B. \_\_\_\_\_
- C. \_\_\_\_\_

### CHECK POINT

#### Penis and Scrotum, Anterior View

1. Name the unattached portion of the penis.
2. Name the distal expansion of the penis.
3. Define flaccid. How does the dorsal surface compare when the penis is flaccid and when it is erect?

- Click on **LAYER 2** in the **LAYER CONTROLS** window, and you will see the following image:



- Mouse-over the pins on the screen to find the information necessary to identify the following structures:

- A. \_\_\_\_\_
- B. \_\_\_\_\_
- C. \_\_\_\_\_

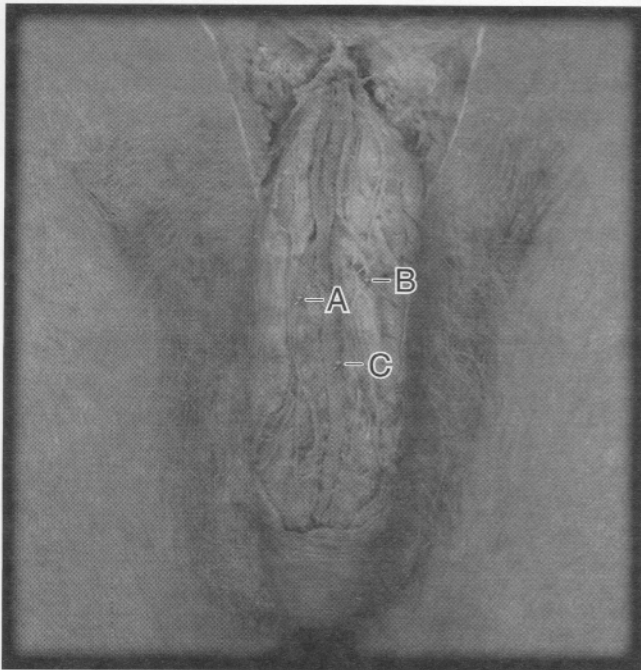
#### Nonreproductive System Structure (blue pin)

- D. \_\_\_\_\_

**CHECK POINT****Penis and Scrotum, Anterior View, continued**

4. Name the large vein on the dorsal surface of the penis that is *not* involved in an erection.
5. Describe the deep fascia of the penis. What is its function?
6. Name the sling of deep fascia that suspends the body of the penis.

- Click on **LAYER 3** in the **LAYER CONTROLS** window, and you will see the following image:



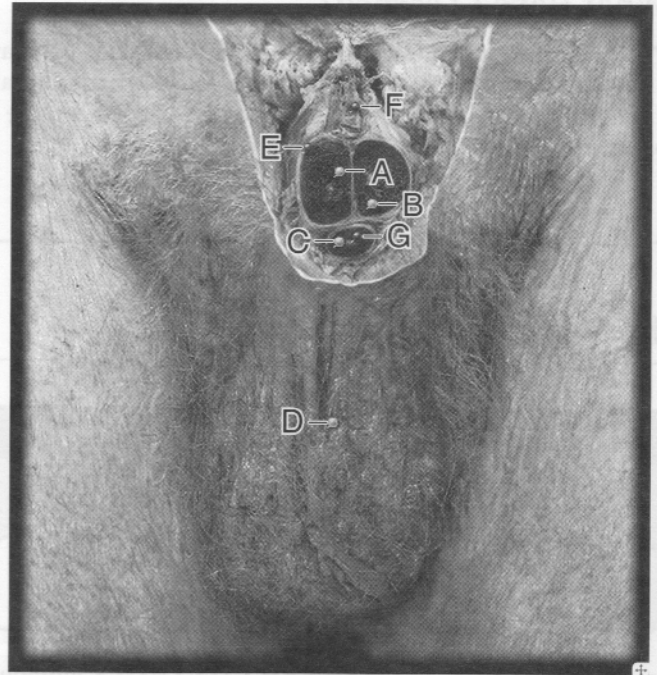
- Mouse-over the pins on the screen to find the information necessary to identify the following structures:

- A. \_\_\_\_\_
- B. \_\_\_\_\_
- C. \_\_\_\_\_

**CHECK POINT****Penis and Scrotum, Anterior View, continued**

7. What prevents blood from escaping the erectile tissue?
8. Name the paired arteries on the dorsal side of the penis that distribute to the skin and glans of the penis.
9. Name the nerve that supplies innervation to the body of the penis.

- Click **LAYER 4** in the **LAYER CONTROLS** window, and you will see the following image:



- Mouse-over the pins on the screen to find the information necessary to identify the following structures:

- A. \_\_\_\_\_
- B. \_\_\_\_\_
- C. \_\_\_\_\_
- D. \_\_\_\_\_
- E. \_\_\_\_\_

**Nonreproductive System Structures (blue pins)**

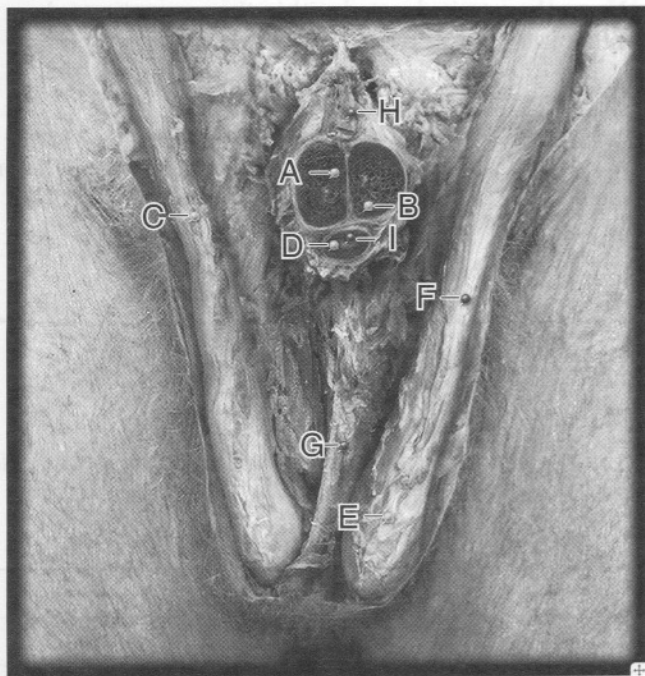
- F. \_\_\_\_\_
- G. \_\_\_\_\_

**CHECK POINT****Penis and Scrotum, Anterior View, continued**

10. Name the distal end cap of the corpora cavernosa.
11. Name the distal end of the corpus spongiosum.
12. Name the vein that drains the erectile tissues of the body of the penis.



- Click **LAYER 5** in the **LAYER CONTROLS** window, and you will see the following image:



- Mouse-over the pins on the screen to find the information necessary to identify the following structures:

- A. \_\_\_\_\_
- B. \_\_\_\_\_
- C. \_\_\_\_\_
- D. \_\_\_\_\_
- E. \_\_\_\_\_
- F. \_\_\_\_\_
- G. \_\_\_\_\_

#### Nonreproductive System Structures (blue pins)

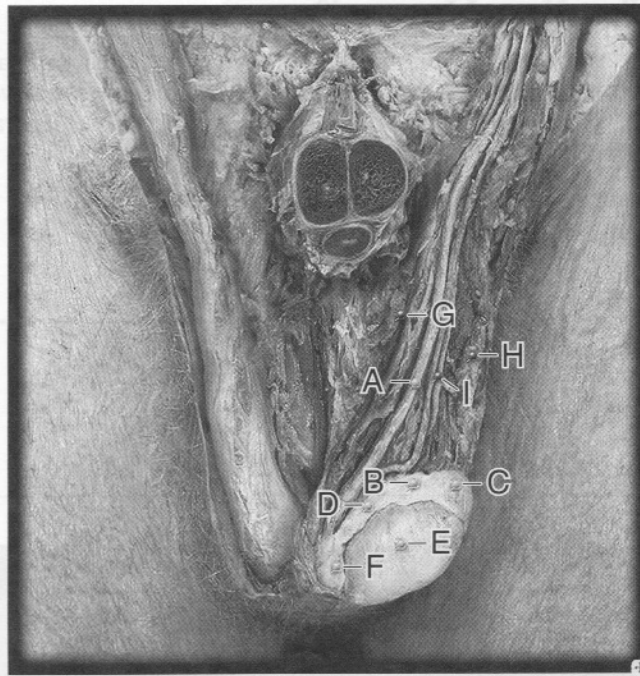
- H. \_\_\_\_\_
- I. \_\_\_\_\_

### CHECK POINT

#### Penis and Scrotum, Anterior View, *continued*

- Name the structures located in the spermatic cord. What muscle is located in the middle fascial layer? What is the function of this muscle?
- Name the structure that separates the right and left testes.
- Name the structures that enclose the spermatic cord. What are the three layers that make up these structures?

- Click **LAYER 6** in the **LAYER CONTROLS** window, and you will see the following image:



- Mouse-over the pins on the screen to find the information necessary to identify the following structures:

- A. \_\_\_\_\_
- B. \_\_\_\_\_
- C. \_\_\_\_\_
- D. \_\_\_\_\_
- E. \_\_\_\_\_
- F. \_\_\_\_\_
- G. \_\_\_\_\_

#### Non-reproductive System Structures (blue pins)

- H. \_\_\_\_\_
- I. \_\_\_\_\_

### CHECK POINT

#### Penis and Scrotum, Anterior View, *continued*

- Name the paired male gonads. What are their functions?
- Name the structure for maturation and storage of spermatozoa. How long can spermatozoa be stored?
- What are the three parts of the structure in question 17?